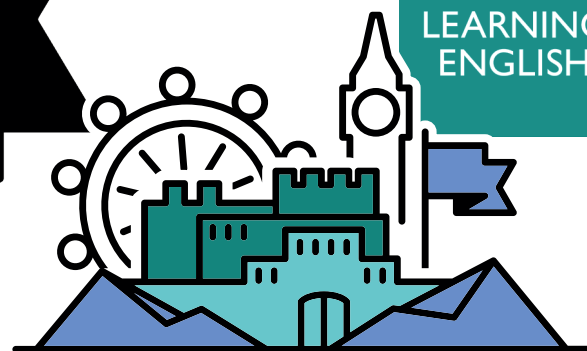


• The London to Edinburgh • CHALLENGE

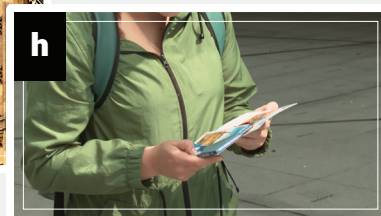
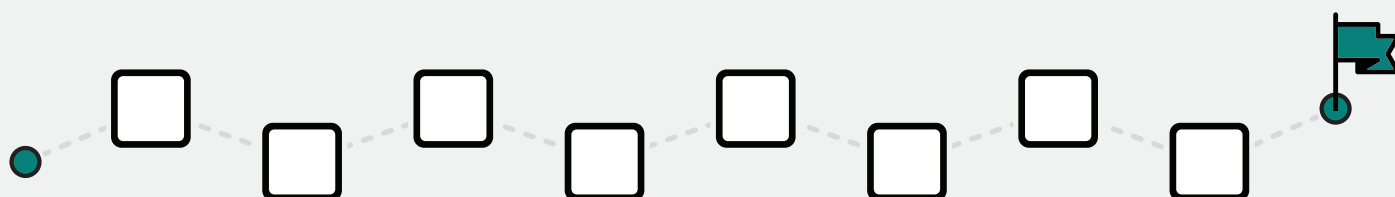
BBC
LEARNING
ENGLISH

Episode 1



Watch the episode again. Put the pictures in the right order.

Activity 1



Activity 2

True or False? Write T for True and F for False.

e.g. They have four days.

F

a They have £70.

☐

b They have a phone.

☐

c Fran, Bob and Paula are in Edinburgh now.

☐

d The presenter is in Edinburgh now.

☐

Who says this? Write the name.

Activity 3



Fran



Bob



Paula

a I'm Fran.	<input type="text"/>	b I'm from York.	<input type="text"/>	c I'm from Cambridge.	<input type="text"/>
d I'm 25.	<input type="text"/>	e I'm Bob.	<input type="text"/>	f I'm from Rochester.	<input type="text"/>
g I'm Paula.	<input type="text"/>	h I'm 20.	<input type="text"/>		

Activity 4

Listen (00.59-2.03) and add the words.

I'm **x5** I'm from **x3** meet and

a	Paula.	Rochester.	b	Fran.	25.	Cambridge.
c	Bob.	20.	York.	d	Nice to	you.
e	you.					

Match the numbers.

Activity 5

10
20
30
40
50
60
70
80
90
100

twenty
sixty
fifty
thirty
seventy
a hundred
eighty
ninety
forty
ten

Activity 6

Complete this about you.

a

Bob Hi!

You Hi! I'm . Nice to meet you.

Bob My name's Bob. Nice to meet you.

You .

b

Fran Hello, I'm Fran.

You Hi Fran, nice to you.

Fran And you.

Now practise this with a partner.